

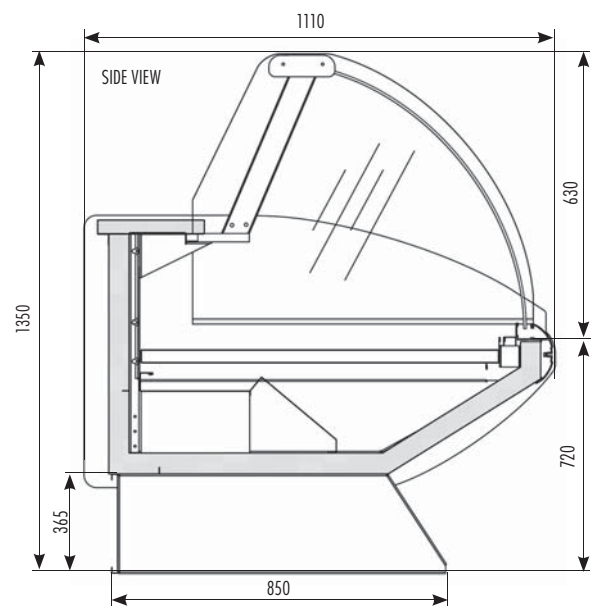


DELI CASE

JUST FOR QUALITY, JUST FOR PRICE, JUST FOR YOU



CGD2440SC



FEATURES

- Front sliding glass for easy cleaning
- Aesthetically pleasing aluminium sections used.
- Removable colour coded bumper rail insert
- Rear sliding glass doors(top)
- Forced air cooling
- Adjustable feet for levelling cabinet
- Chromadek exterior finish
- Stainless steel work top for extra durability
- Polyurethane foam injected
- Temperature regulation by thermostat
- Automatic defrost
- Light switch

OPTIONAL EXTRAS

- Optional colour coded base and bumper rail insert
- Optional colour coded black interior
- Optional Stainless steel flat trays

		CGD1220SC	CGD1830SC	CGD2440SC
LENGTH	mm	1300	1910	2520
HEIGHT	mm	1350		
DEPTH	mm	1100		
LENGTH(CRATED)	mm	1420	2030	2650
HEIGHT(CRATED)	mm	1590		
DEPTH (CRATED)	mm	1240		
WEIGHT - NETT	Kg	158	231	260
WEIGHT - CRATED	Kg	185	262	305
DISPLAY AREA	m ²	0.78	1.37	1.73
VOLTAGE	Hz	220/240V 50Hz		
RUNNING AMPS	A	4	4.6	5.8
COMPRESSOR WATTS	watts	713	926	1285
COMPRESSOR REFRIGERANT		R134A		
COOLING FANS		1	2	3
TEMPERATURE RANGE	°C	+4°C TO +8°C		
DEFROST METHOD		FORCED		

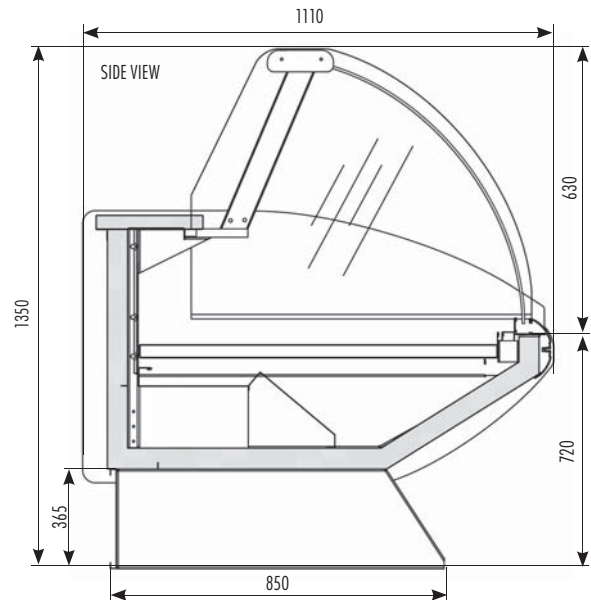


DELI FREEZER

JUST FOR QUALITY, JUST FOR PRICE, JUST FOR YOU



CGDF1830SC



FEATURES

- Front sliding glass for easy cleaning
- Aesthetically pleasing aluminium sections used.
- Removable colour coded bumper rail insert
- Rear sliding perspex doors(top)
- Adjustable feet for levelling cabinet
- Chromadek exterior finish
- Stainless Steel interior finish
- Stainless steel work top for extra durability
- Polyurethane foam injected
- Temperature regulation by thermostat
- Automatic defrost
- Light switch

OPTIONAL EXTRAS

- Optional colour coded base and bumper rail insert
- Optional colour coded black interior
- Optional Stainless steel bins for loose veg

		CGDF1830SC
LENGTH	mm	1910
HEIGHT	mm	1350
DEPTH	mm	1100
LENGTH(CRATED)	mm	2030
HEIGHT(CRATED)	mm	1590
DEPTH (CRATED)	mm	1240
WEIGHT - NETT	Kg	230
WEIGHT - CRATED	Kg	278
DISPLAY AREA	m ²	1.37
VOLTAGE	Hz	220/240V 50Hz
RUNNING AMPS	A	7
COMPRESSOR WATTS	w	1072
COMPRESSOR REFRIGERANT		R404
WATTAGE OF DEFROST ELEMENT	watts	1000
TEMPERATURE RANGE	°C	-14°C to -18 C
DEFROST METHOD		ELECTRIC

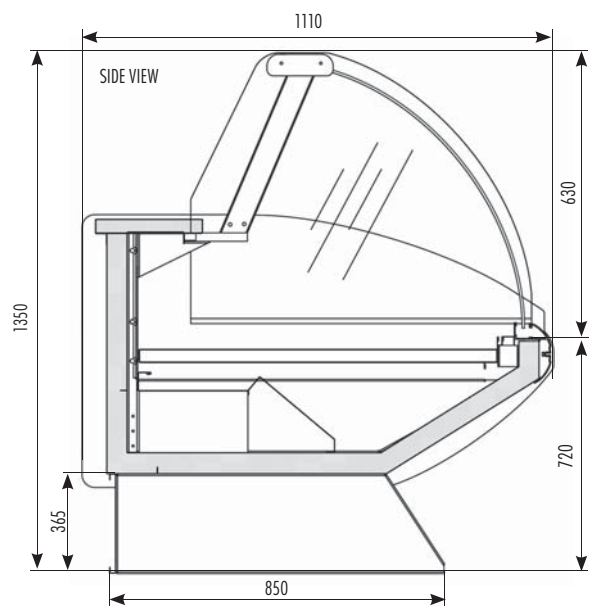


MEAT CASE

JUST FOR QUALITY, JUST FOR PRICE, JUST FOR YOU



CGM2240SC



FEATURES

- Front sliding glass for easy cleaning
- Aesthetically pleasing aluminium sections used.
- Removable colour coded bumper rail insert
- Stainless steel dishes supplied with cabinet
- Rear sliding glass doors(top)
- Forced air cooling
- Adjustable feet for levelling cabinet
- Chromadek exterior finish
- Stainless steel interior base
- Stainless steel work top for extra durability
- Rear plug point for electronic scale etc
- Polyurethane foam injected
- Temperature regulation by thermostat
- Automatic defrost
- Light switch

OPTIONAL EXTRAS

- Optional colour coded base and bumper rail insert
- Optional colour coded black interior
- Optional Stainless steel flat deck
- Meat bins

		CGM1220SC	CGM1830SC	CGM2440SC
LENGTH	mm	1300	1910	2520
HEIGHT	mm	1350		
DEPTH	mm	1100		
LENGTH(CRATED)	mm	1420	2030	2650
HEIGHT(CRATED)	mm	1590		
DEPTH (CRATED)	mm	1240		
WEIGHT - NETT	Kg	158	218	300
WEIGHT - CRATED	Kg	185	265	345
DISPLAY AREA	m ²	0.78	1.370	1.728
VOLTAGE	Hz	220/240V 50Hz		
RUNNING AMPS	A	4	5.5	9
COMPRESSOR WATTS	watts	584	989	1250
COMPRESSOR REFRIGERANT		R134A		
COOLING FANS		1	2	3
TEMPERATURE RANGE	°C	-4°C to 0°C		
DEFROST METHOD		FORCED		

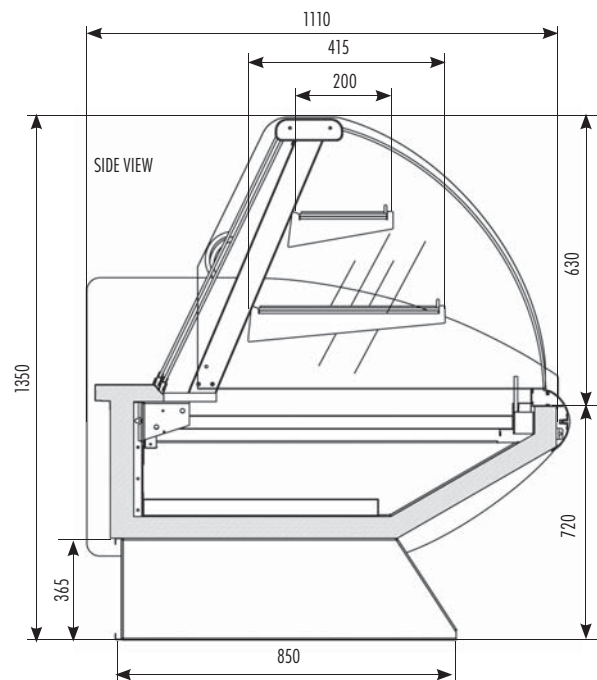


PASTRY CASE

JUST FOR QUALITY, JUST FOR PRICE, JUST FOR YOU



CGPAT2440SC



FEATURES	
Front sliding glass for easy cleaning	
Aesthetically pleasing aluminium sections used.	
Removable colour coded plastic bumper rail insert	
Sliding bottom loading drawers as standard	
Rear sliding glass doors(top)	
Adjustable feet for levelling cabinet	
Chromadek exterior finish	
Stainless steel work top for extra durability	
Polyurethane foam injected	
Temperature regulation by thermostat	
Automatic defrost	
Light switch	
Two tier adjustable glass shelving	

OPTIONAL EXTRAS	
Optional colour coded base and bumper rail insert	
Optional colour coded black interior	

		CGPAT1220SC	CGPAT1830SC	CGPAT2440SC
LENGTH	mm	1300	1910	2520
HEIGHT	mm	1350		
DEPTH	mm	1100		
LENGTH(CRATED)	mm	1420	2030	2650
HEIGHT(CRATED)	mm	1590		
DEPTH (CRATED)	mm	1240		
WEIGHT - NETT	Kg	158	235	300
WEIGHT - CRATED	Kg	185	285	345
DISPLAY AREA	m ²	1.14	1.9	2.45
VOLTAGE	Hz	220/240V 50Hz		
RUNNING AMPS	A	4	5	5.8
COMPRESSOR WATTS	watts	713	926	1285
COMPRESSOR REFRIGERANT		R134A		
COOLING FANS		1	2	3
TEMPERATURE RANGE	°C	+8°C TO +10°C		
DEFROST METHOD		FORCED		

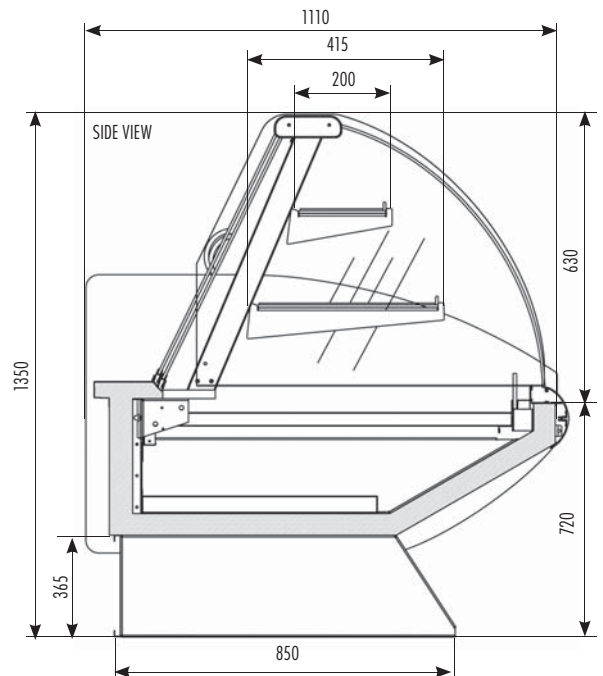


PIE WARMER

JUST FOR QUALITY, JUST FOR PRICE, JUST FOR YOU



CGPW1220SC



FEATURES

- Front sliding glass for easy cleaning
- Aesthetically pleasing aluminium sections used.
- Rear top sliding glass doors
- Removable colour coded plastic bumper rail insert
- Adjustable feet for levelling cabinet
- Chromadek exterior finish
- Stainless steel work top for extra durability
- Polyurethane foam injected
- Temperature regulation by thermostat
- Forced air circulation for even heat
- Light switch

OPTIONAL EXTRAS

- Optional colour coded base and bumper rail insert
- Optional colour coded black interior

		CGPW1220SC
LENGTH	mm	1300
HEIGHT	mm	1350
DEPTH	mm	1100
LENGTH(CRATED)	mm	1420
HEIGHT(CRATED)	mm	1590
DEPTH (CRATED)	mm	1240
WEIGHT - NETT	Kg	136
WEIGHT - CRATED	Kg	165
No. OF SHELVES		2
VOLTAGE	Hz	220/240V 50Hz
NUMBER OF ELEMENTS		2
WATTAGE OF ELEMENTS	watts	1400
AMPERAGE	A	6
TEMPERATURE RANGE	°C	30°C - 65°C

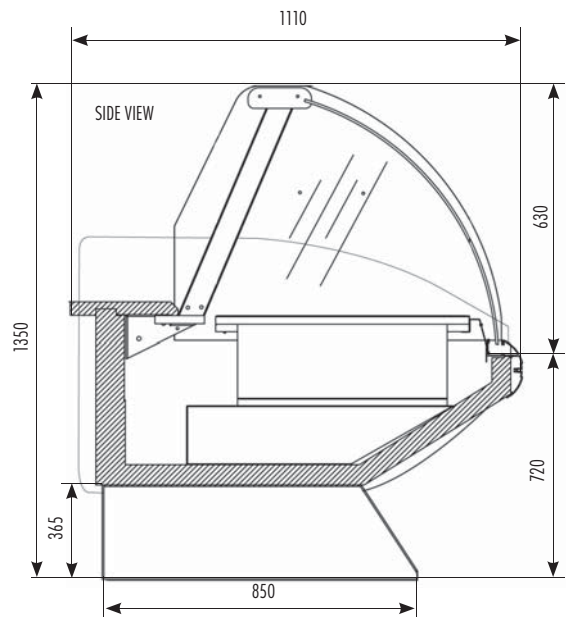


FOOD WARMER

JUST FOR QUALITY, JUST FOR PRICE, JUST FOR YOU



CGFW2440SC



FEATURES

- Front sliding glass for easy cleaning
- Aesthetically pleasing aluminium sections used.
- Rear sliding glass doors
- Removable colour coded plastic bumper rail insert
- Adjustable feet for levelling cabinet
- Chromadek exterior finish
- Stainless steel work top for extra durability
- Polyurethane foam injected
- Temperature regulation by thermostat
- Automatic element burn out protection
- Light switch
- Water (Auto Re-fill)

OPTIONAL EXTRAS

- Optional colour coded base and bumper rail insert
- Optional colour coded black interior
- Optional glass shelves

		CGFW1220SC	CGFW1830SC	CGFW2440SC
LENGTH	mm	1300	1910	2520
HEIGHT	mm	1350		
DEPTH	mm	1100		
LENGTH(CRATED)	mm	1420	2030	2650
HEIGHT(CRATED)	mm	1590		
DEPTH (CRATED)	mm	1240		
WEIGHT - NETT	mm	127	175	198
WEIGHT - CRATED	Kg	142	225	244
DISPLAY AREA	m ²	0.78	1.37	1.728
VOLTAGE	Hz	220/240V 50Hz		
NUMBER OF ELEMENTS		2	2	2
WATTAGE OF ELEMENTS	watts	1150	1500	2000
TEMPERATURE RANGE	°C	30°C - 75°C (DRY HEAT) • 30°C - 65°C (WET HEAT)		
NUMBER OF FULL INSERT DIVISIONS		3	5	7
NUMBER OF THIRD INSERT DIVISIONS		3	5	7

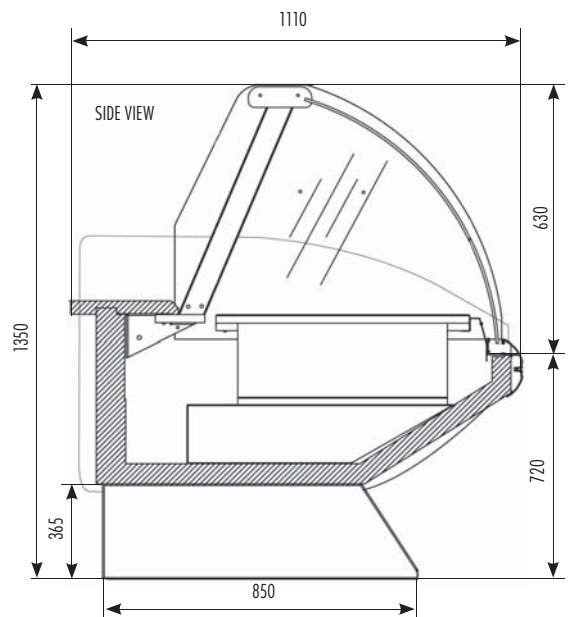


BAINE MARIE

JUST FOR QUALITY, JUST FOR PRICE, JUST FOR YOU



CGBM2440SC



FEATURES
Front sliding glass for easy cleaning
Aesthetically pleasing aluminium sections used.
Removable colour coded plastic bumper rail insert
Adjustable feet for levelling cabinet
Chromadek exterior finish
Stainless steel work top for extra durability
Polyurethane foam injected
Temperature regulation by thermostat
Safety switch in the case of no water
Light switch
Top rear sliding doors
OPTIONAL EXTRAS
Optional colour coded base and bumper rail insert
Optional colour coded black interior
Optional glass shelves

		CGBM1220SC	CGBM1830SC	CGBM2440SC
LENGTH	mm	1300	1910	2520
HEIGHT	mm	1350		
DEPTH	mm	1100		
LENGTH(CRATED)	mm	1420	2030	2650
HEIGHT(CRATED)	mm	1590		
DEPTH (CRATED)	mm	1240		
WEIGHT - NETT	Kg	136	175	207
WEIGHT - CRATED	Kg	165	225	252
DISPLAY AREA	m ²	1.16	1.71	2.197
VOLTAGE	Hz	220/240V 50Hz		
AMPERAGE	A	7	15	22
NUMBER OF ELEMENTS		1	2	2
WATTAGE OF ELEMENTS	watts	1500	3000	3000
NUMBER OF FULL INSERT DIVISIONS		3	5	6